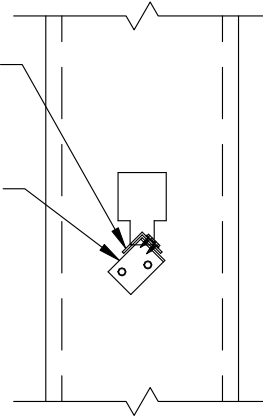


ClarkDietrich BUILDING SYSTEMS
SPAZZER™9200

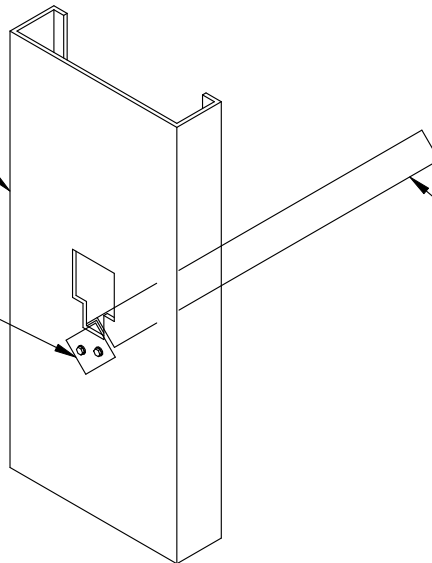
ClarkDietrich BUILDING SYSTEMS
1-1/2" x 1-1/2" x 18ga. CLIP ANGLE
W/DRYWALL SCREWS TYP.
AS REQUIRED FOR DESIGN



SECTION

ClarkDietrich BUILDING SYSTEMS
TYPICAL STUD

ClarkDietrich BUILDING SYSTEMS
1-1/2" x 1-1/2"
x 18ga. CLIP ANGLE
W/DRYWALL SCREWS TYP.
AS REQUIRED FOR DESIGN



ClarkDietrich BUILDING SYSTEMS
SPAZZER™9200
BRIDGING/SPACER BAR
INSTALL PER MANUFACTURER'S
INSTRUCTIONS.

SPAZZER 9200 BRIDGING DETAIL2



ClarkDietrich.
BUILDING SYSTEMS

Engineering Services: (877) 832-3206

Technical Services: (888) 437-3244

The CAD detail library is intended to provide general framing details only and does not replace the judgments and designs of a qualified architect and/or engineer. The details are provided as a starting tool to assist the user in creating and detailing cold-formed steel framing construction details. Each detail including accompanying text must be thoroughly evaluated and approved by a qualified architect or engineer. | Find over 500 CAD details at cad.clarkdietrich.com | © Copyright 2015 ClarkDietrich Building Systems