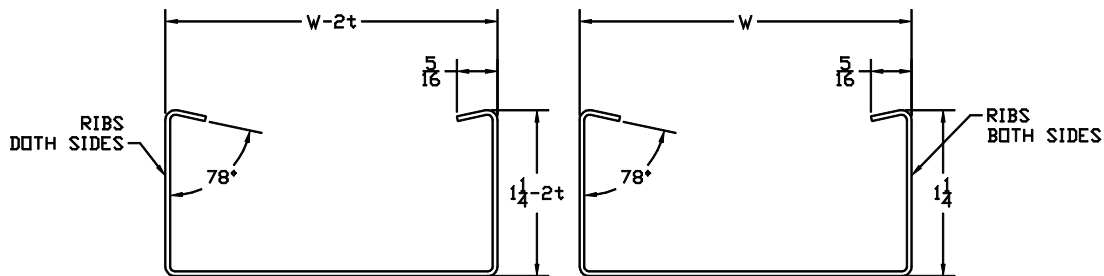


25GA-20GA
0.017-0.036

slip stud



25GA-20GA
0.017-0.036

25GA-20GA
0.017-0.036

$W = 2 \frac{1}{2}, 3 \frac{1}{2} \text{ \& } 5 \frac{1}{2}$
 $t = \text{MATERIAL THICKNESS}$

13 STANDARD TRAKLOC STUD AND TRACK



ClarkDietrich
BUILDING SYSTEMS

Engineering Services: (877) 832-3206

Technical Services: (888) 437-3244

The CAD detail library is intended to provide general framing details only and does not replace the judgments and designs of a qualified architect and/or engineer. The details are provided as a starting tool to assist the user in creating and detailing cold-formed steel framing construction details. Each detail including accompanying text must be thoroughly evaluated and approved by a qualified architect or engineer. | Find over 500 CAD details at cad.clarkdietrich.com | © Copyright 2015 ClarkDietrich Building Systems