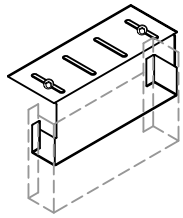


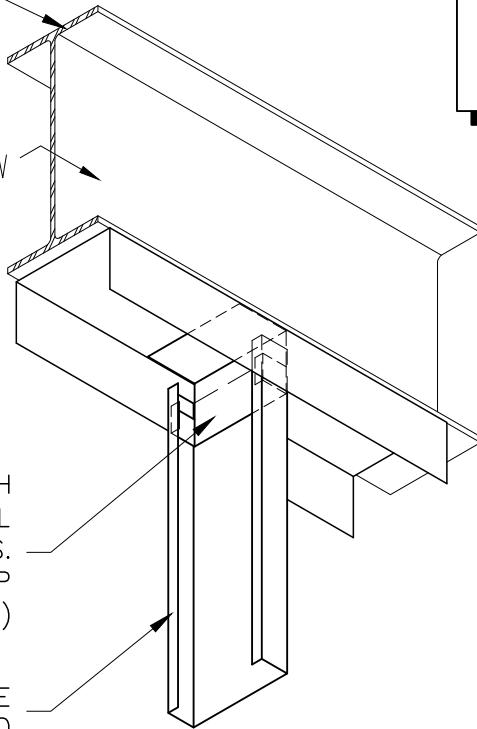
INSTALLATION NOTES:

- 1) TO ENSURE DRIFT, BACK OUT THE FASTENERS TO THE STRUCTURE ABOUT 1/2 TURN.
- 2) INSTALLER TO ENSURE DRYWALL SCREWS DO NOT INTERFERE WITH CLIP MOVEMENT.

CONTINUOUS STRL
STEEL BY OTHERS



ELEV. VIEW

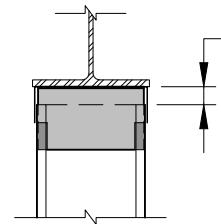


CLARKDIETRICH DHOW8-LG/HG WITH
(2) 1/4"-14 SCREWS TO STRL
STEEL, CENTERED IN DRIFT SLOTS.
SLIDE "C" SHAPE END OF CLIP
INSIDE STUD (DO NOT FASTEN)

1-5/8" FLANGE
STUD AS REQUIRED

LATERAL BRIDGING AS
REQUIRED NOT MORE THAN
12" FROM TOP OF STUD

GAP AS REQ'D
TO ALLOW
FOR VERTICAL
DEFLECTION



ELEV. VIEW

DRIFT HEAD-OF-WALL (DHOW8)

CONNECTION TO STEEL STRUCTURE



Engineering Services: (877) 832-3206

Technical Services: (888) 437-3244

The CAD detail library is intended to provide general framing details only and does not replace the judgments and designs of a qualified architect and/or engineer. The details are provided as a starting tool to assist the user in creating and detailing cold-formed steel framing construction details. Each detail including accompanying text must be thoroughly evaluated and approved by a qualified architect or engineer. | Find over 500 CAD details at cad.clarkdietrich.com | © Copyright 2020 ClarkDietrich